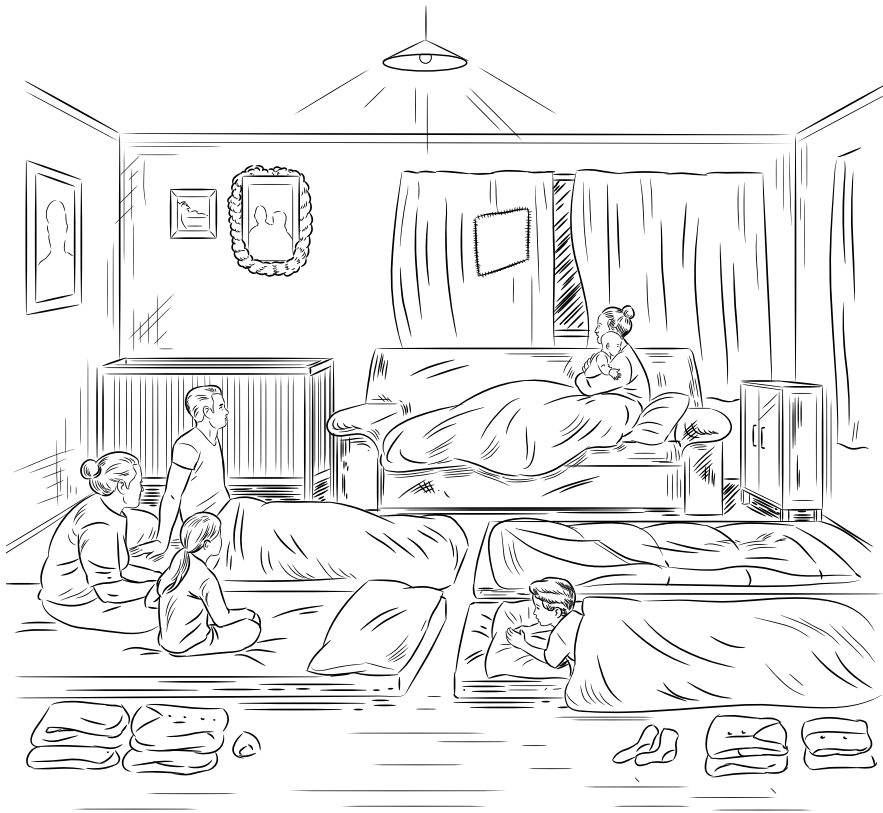


Crowded Homes and Child Poverty

CHILDREN IN POVERTY ARE MORE LIKELY TO LIVE IN CROWDED HOUSING

16% OF KIWI KIDS LIVE IN CROWDED HOMES



Children are considered to live in crowded homes where one or more extra bedrooms are needed for the number of people living in the house

CROWDING can cause SERIOUS HEALTH PROBLEMS
IN NEW ZEALAND IT HAS BEEN LINKED TO
MENINGOCOCCAL DISEASE
OR RHEUMATIC FEVER

47% PASIFIKA **25% MĀORI** **21% ASIAN/INDIAN** **5% EUROPEAN** CHILDREN LIVE IN CROWDED HOMES