

2014

Severe Poverty

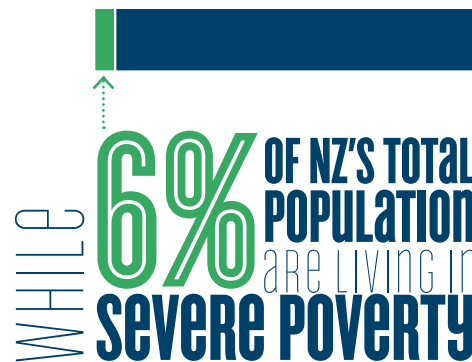
CHILDREN IN SEVERE POVERTY ARE LIVING IN HOUSEHOLDS WITH BOTH LOW INCOMES AND MATERIAL DEPRIVATION

1 in 10 KIWI KIDS ARE AT THE HARDEST END* OF POVERTY

THEY ARE GOING WITHOUT THE THINGS THEY NEED AND THEIR LOW FAMILY INCOME MEANS THEY DON'T HAVE ANY OPPORTUNITY TO CHANGE THIS



OF CHILDREN ARE LIVING IN SEVERE POVERTY



*this is based on the most recent available data from 2012