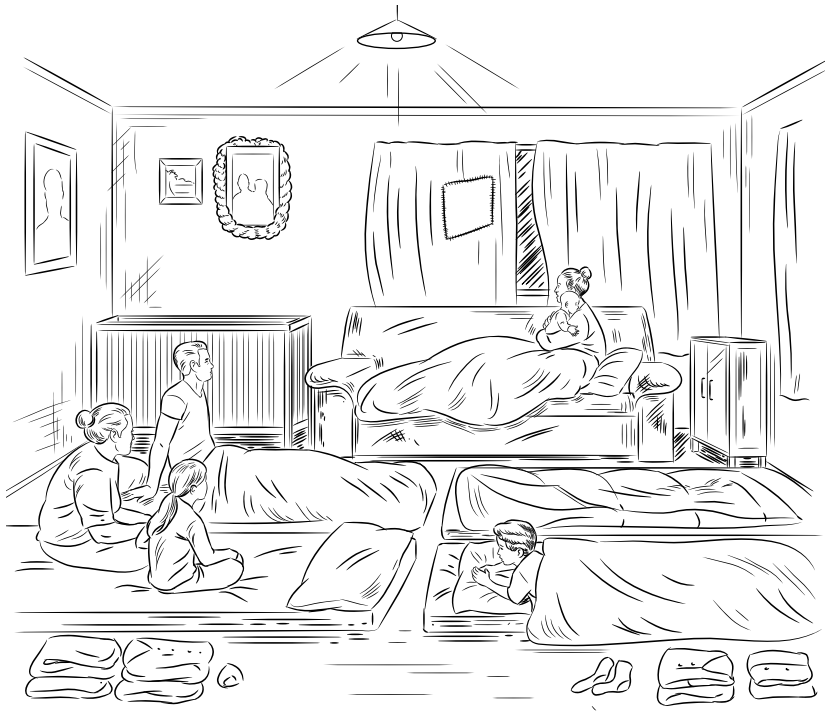


Crowded Homes and Child Poverty

CHILDREN* IN POVERTY ARE MORE LIKELY TO LIVE IN CROWDED HOUSING

16% OF KIWI KIDS LIVE IN CROWDED HOMES



Children are considered to live in crowded homes when one or more bedrooms are needed for the number of people living in the house

CROWDING CAN CAUSE SERIOUS HEALTH PROBLEMS
 IN NEW ZEALAND IT HAS BEEN LINKED TO
MENINGOCOCCAL DISEASE
OR RHEUMATIC FEVER

50% PASIFIKA **25% MAORI** **20% ASIAN/INDIAN** **5% EUROPEAN** CHILDREN LIVE IN CROWDED HOMES

40% OF FAMILIES IN THE LOWEST INCOME BRACKET ARE SPENDING MORE THAN 30% OF THEIR INCOME ON HOUSING

*Children aged 0-14 years.