

INCOME POVERTY MEASURES LOOK AT THE AMOUNT OF MONEY FAMILIES NEED TO PAY BILLS AND PURCHASE EVERYDAY ESSENTIALS

305,000 KIWI KIDS LIVE IN POVERTY

THAT'S MORE THAN
1 in 4
CHILDREN*

THEIR FAMILIES LIVE OFF LESS THAN **60%** OF NZ'S median income

ADJUSTED AFTER TAX FOR FAMILY SIZE AND TYPE



INCOME IS AFTER HOUSING COSTS AS THIS IS A SIGNIFICANT AND FIXED PORTION OF HOUSEHOLD SPENDING. IT SHOWS WHAT IS LEFT FOR OTHER ESSENTIALS.

ON AVERAGE:

CHILDREN IN POVERTY BY HOUSEHOLD INCOME



CHILDREN ARE MORE THAN TWICE AS LIKELY TO BE IN POVERTY THAN THOSE AGED 65+

ON AVERAGE:

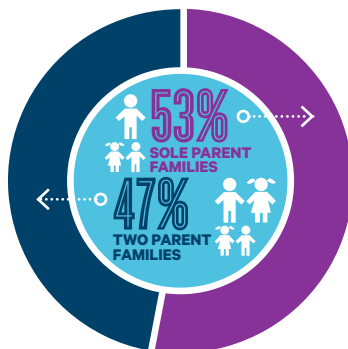
1 in 3 PASIFIKA CHILDREN ARE IN POVERTY

1 in 3 MĀORI CHILDREN ARE IN POVERTY

1 in 6 EUROPEAN CHILDREN ARE IN POVERTY

ON AVERAGE:

CHILDREN IN POVERTY BY FAMILY TYPE



*this is based on relative poverty measures. Other data here is based on fixed line measures of poverty.